

Finding the Right Target: An Interaction Between Drugs and Bowel Cancer Cells

Hammed Badmos, PhD.



Scotland
Institute



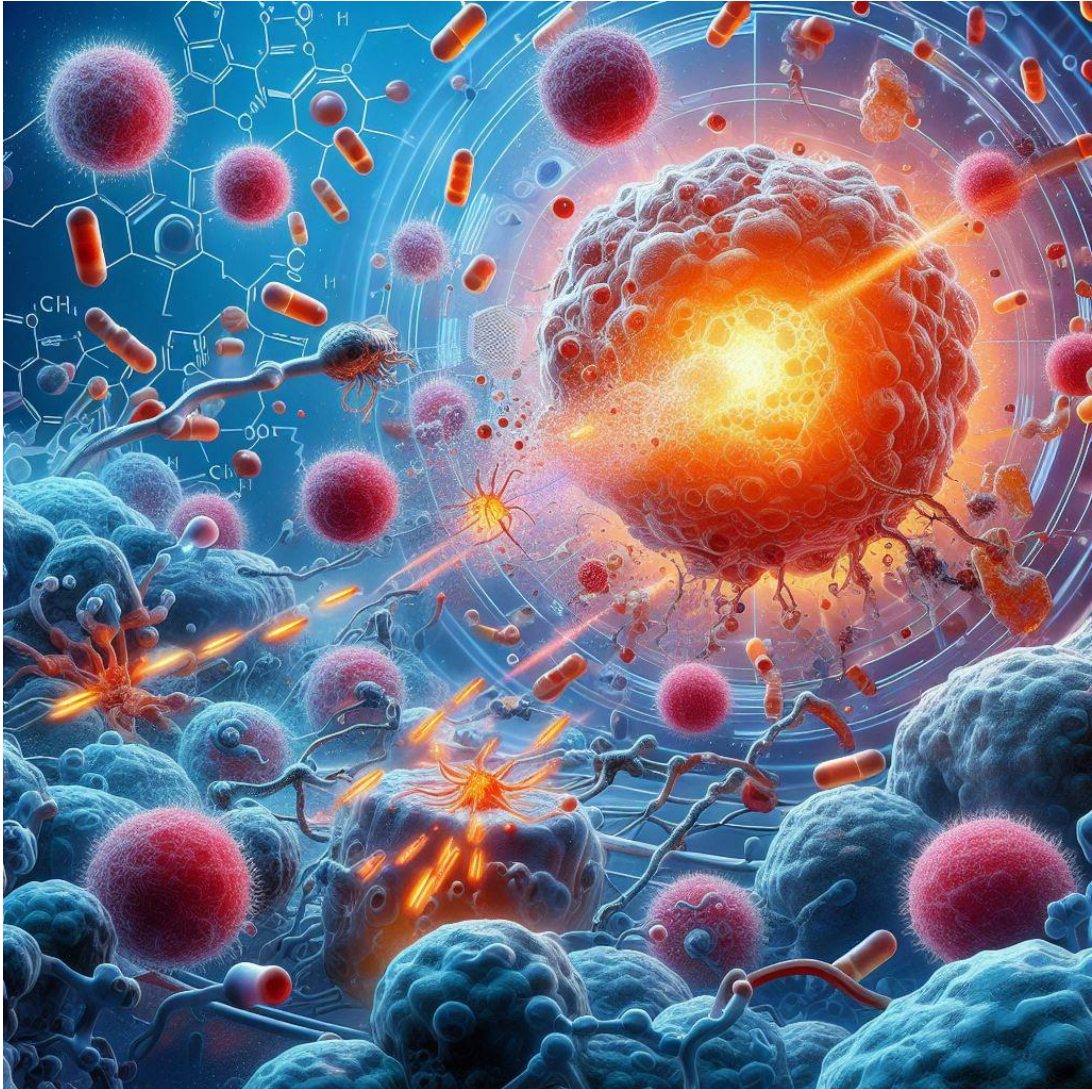
School of
Cancer Sciences

Background



- 1 in 4 patients is affected by cancer
- Bowel cancer is the second most common cancer in Scotland
- No good treatment for metastatic patient which is the major killer

Background

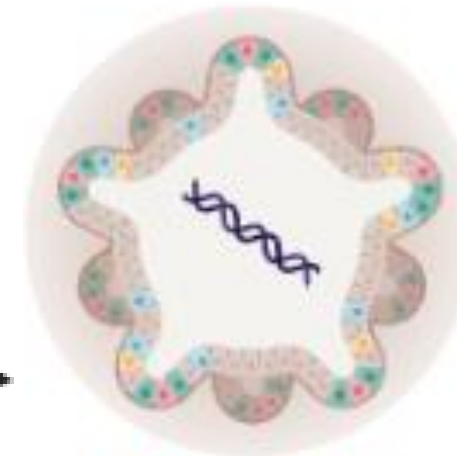


Drug attacking to its target in living cells

Overview



Patient-derived organoids



Nanoluc organoids



- Drug response?
- Target engagement?
- Combination therapy

Pathway to Impact for PPI

- Relationship with  CANCER RESEARCH UK |  RADNET GLASGOW



- Patient and Research Together (PaRT) focus group



- Interact with Bowel Cancer Patients/Families through Dr Colin Steele and Professor Richard Wilson.

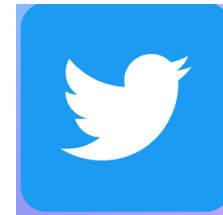


Pathway to Impact for PPI

- Organisation of lunch lab visitation to 10-15 service users. Feedback on project and involvement.



- Engagement with patients and their families through social media in collaboration with institutes and charities.



Year 2

Pathway to Impact for PPI

- Organisation of afternoon lab visitation to 10-15 service users and researchers. Input on data and project progress.



- Review of the impact of PPI on the current project and taking forward lessons learnt for future funding application.



Year 3

Thanks for Listening



Scotland
Institute



**CHIEF
SCIENTIST
OFFICE**



University
of Glasgow

School of
Cancer Sciences

Questions

Patient and public involvement. Use the Hemmingway app to reduce the technicality of your sentence.

Guidance on the unmet need for patients

To do

Overall impact should come out of the project. General term should be used. Avoid scientific term. Avoid or explain organoids, combination therapy (targeted and chemotherapy), viral coding. Background and Introduce colorectal cancer (Bowel cancer). Start with the patients and end with impact on patients in the overview (1st slide then background on 2nd slide).

CSO logo.

Use PIRIT for recording PPI.

Detail regarding the project.

Benefit of patient visit to the research. Questions regarding the project.
And improve impact.